

# GT301 Manage Tool User Guide

## GSM/GPRS/GNSS Tracker

TRACGT301MT001

Revision: 1.02



*International Telematics Solutions Innovator*

[www.queclink.com](http://www.queclink.com)

<b>Document Title</b>	GT301 Manage Tool User Guide
<b>Version</b>	1.02
<b>Date</b>	2018-11-19
<b>Status</b>	Release
<b>Document Control ID</b>	TRACGT301MT001

### General Notes

Queclink offers this information as a service to its customers, to support application and engineering efforts that use the products designed by Queclink. The information provided is based upon requirements specifically provided to Queclink by the customers. Queclink has not undertaken any independent search for additional relevant information, including any information that may be in the customer's possession. Furthermore, system validation of this product designed by Queclink within a larger electronic system remains the responsibility of the customer or the customer's system integrator. All specifications supplied herein are subject to change.

### Copyright

This document contains proprietary technical information which is the property of Queclink Wireless Solutions Co., Ltd. The copying of this document and giving it to others and the using or communication of the contents thereof, are forbidden without express authority. Offenders are liable to the payment of damages. All rights are reserved in the event of grant of a patent or the registration of a utility model or design. All specifications supplied herein are subject to change without notice at any time.

## Contents

Contents .....	2
0. Revision History .....	3
1. GT301 Manage Setup Wizard .....	4
1.1. System Requirements .....	4
1.2. COM Setting .....	5
1.3. Quick Setting Wizard .....	5
1.4. Professional Setting Windows .....	6
1.4.1. Menus .....	6
1.4.1.1. Start Menu .....	6
1.4.1.2. Tool Menu .....	6
1.4.1.3. Help Menu .....	8
1.4.2. Toolbar .....	8
1.4.3. Command Brower and Command Operation Space .....	9
1.4.3.1. Command Brower .....	9
1.4.3.2. Command Operation Space .....	10
1.4.4. Title Bar .....	10
1.4.5. Status Bar .....	10
1.5. Operation Result Interface .....	11
1.5.1. Operation Successful Interface .....	11
1.5.2. Operation Failed Interface .....	11
2. GT301 Operation Instructions .....	12
2.1. Device Configuration with Quick Setting Wizard .....	12
2.1.1. Welcome to Quick Setting Wizard .....	12
2.1.2. GPRS Network Setting .....	13
2.1.3. Main Server Setting .....	14
2.1.4. Fixed Time Report Setting .....	15
2.1.5. Sending Command to Device .....	16
2.2. Device Configuration in Professional Setting Mode .....	17
2.3. Read/Save All Configurations .....	17
2.4. Load/Send All Configurations .....	19

## 0. Revision History

Revision	Date	Author	Description of Change
1.00	2016-09-13	Ida Li	Initial.
1.01	2017-12-14	Rina Xia	Added <b>AT+GTWLT</b> to set white call list table.
1.02	2018-11-19	Rina Xia	Updated MT version number.

## 1. GT301 Manage Setup Wizard

GT301 Manage Tool is PC software which can be used to configure GT301 through Data\_Cable\_M. It is easy for the backend server developers to configure GT301 with the Manage Tool, which has friendly user interface. The correct command messages sent to GT301 will be displayed on the manage tool. (These messages can also be sent by SMS or GPRS).

The administrators can also use the manage tool to configure GT301 before sale. But it is strongly recommended to establish a backend server and control GT301 by SMS or GPRS. Please refer to "GT301 @Track Air Interface Protocol 2nd generation" for details.

Before using the Manage Tool, please find "PL2303\_Prolific\_DriverInstaller\_v1417.zip" in developer suite and install the drive for PL2303. After that, a new COM port can be found in the PC system. Then please follow the steps below:

1. Power on GT301.
2. Connect GT301 to PC with Data\_Cable\_M.
3. Run "Queclink\_GT301\_Manage\_Tool\_V1.06.exe".

### 1.1. System Requirements

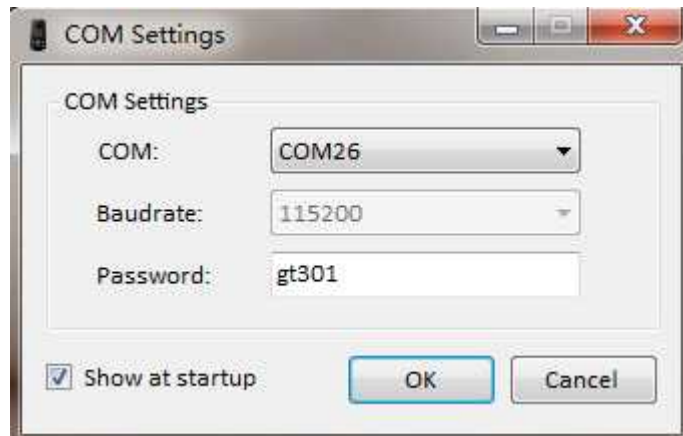
In order for this Manage Tool to run on your computer, you must use it in operating system below:

- ◆ Windows 98SE;
- ◆ Windows ME Windows 2000 SP4;
- ◆ Windows XP SP2 and above (32 & 64 bit);
- ◆ Windows Server 2003 (32 & 64 bit);
- ◆ Windows Server 2008 (32 & 64 bit);
- ◆ Windows Vista (32 & 64 bit);
- ◆ Windows 7 (32 & 64 bit);

Supported System Environments:

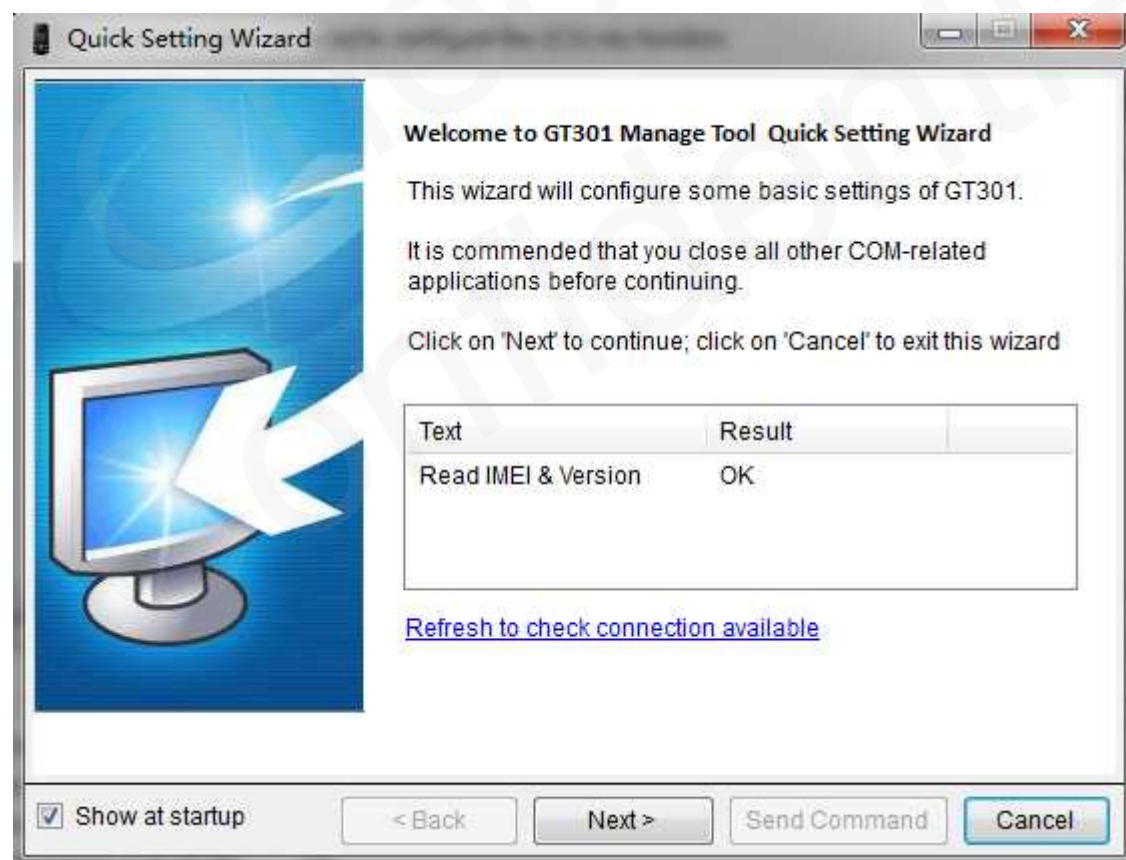
- ◆ Microsoft .NET Framework 2.0 or higher

## 1.2. COM Setting



Select the COM port and baud rate, and input the password "GT301". Then the main window will be displayed.

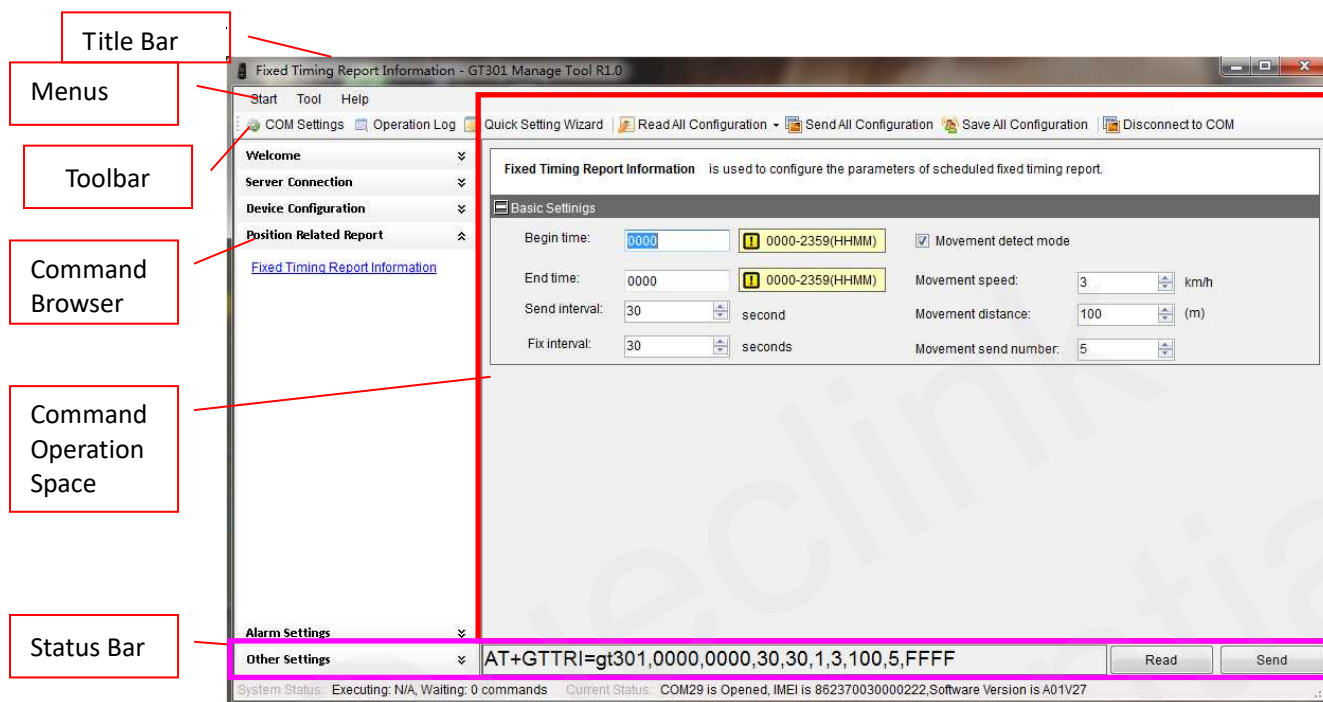
## 1.3. Quick Setting Wizard



The Quick Setting Wizard provides basic settings for the device. If you want to use more functions of GT301, please change to enter professional setting mode.

Before you enter Quick Setting Wizard, you must make sure the COM connection is OK.  
Please refer to Chapter 3.1 for the details of setting with Quick Setting Wizard.

## 1.4. Professional Setting Windows

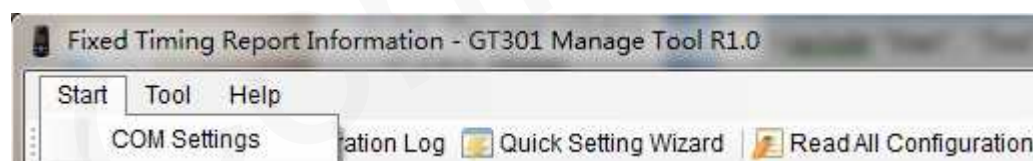


### 1.4.1. Menus

Start Tool Help

There are "Start", "Tool" and "Help" menu in menus.

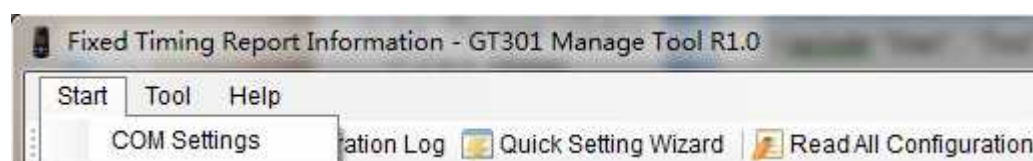
#### 1.4.1.1. Start Menu



Start menu includes "COM Settings".

**[COM Setting]:** It is used to set the COM information and password. For Setting details, please refer to Chapter 1.2.

#### 1.4.1.2. Tool Menu

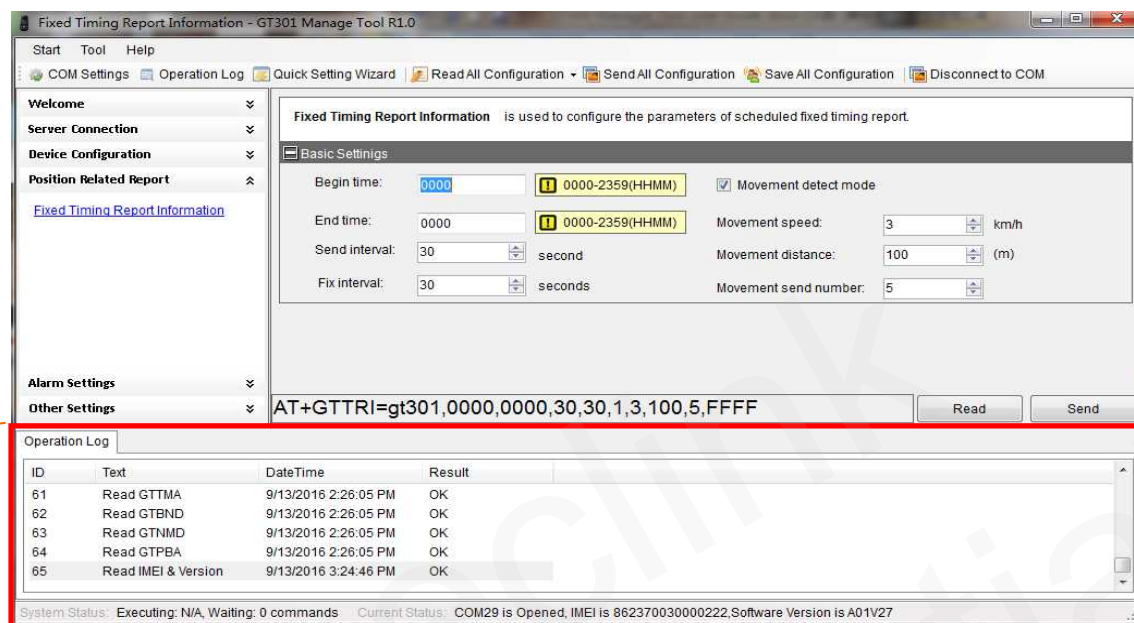


Tool menu includes "Quick Setting Wizard", "Operation Log", and "Options" settings.



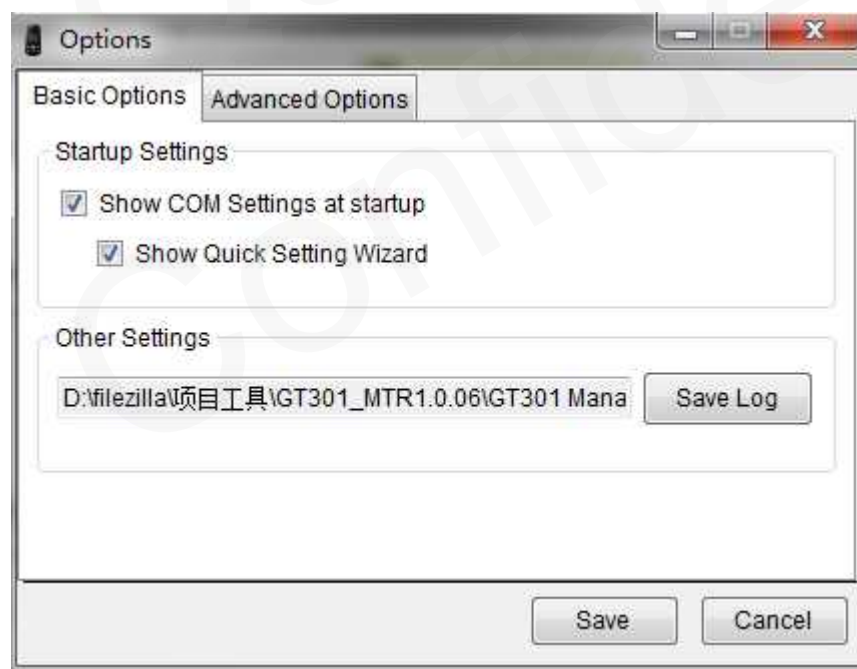
**[Quick Setting Wizard]:** It is used to open Quick Setting Wizard directly. Please refer to Chapter 2.1 for details.

**[Operation Log]:** It is used to display/hide the operation log.



**[Options]:** It is used to configure the basic settings of the Manage Tool.

“Basic Options” includes startup setting options and log save option.

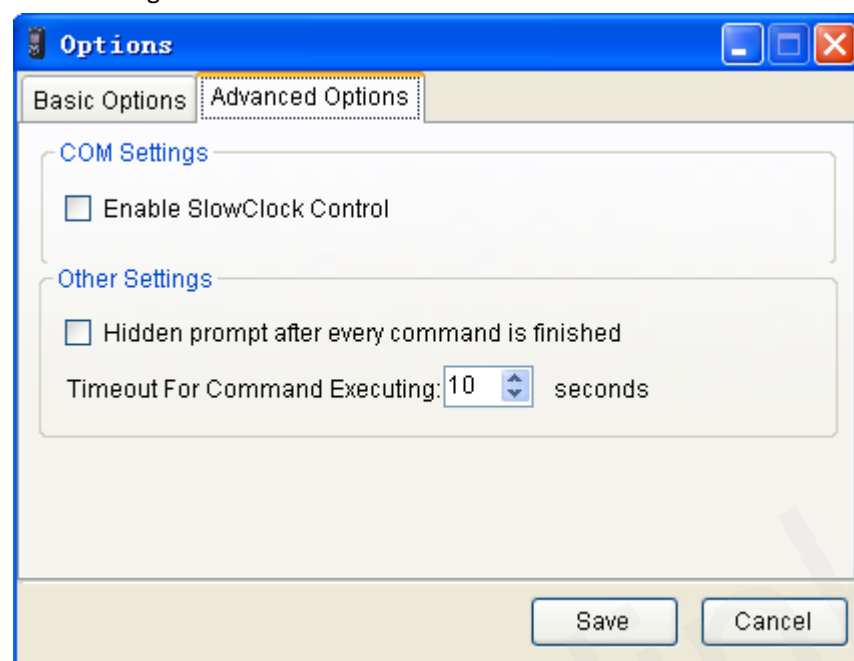


“Advanced Options” includes COM settings and other settings.

COM Settings is used to configure COM settings. It is recommended to use default settings for



these settings.



#### 1.4.1.3.Help Menu

[About]: Select “About”. Then the following pop-up window will be displayed.



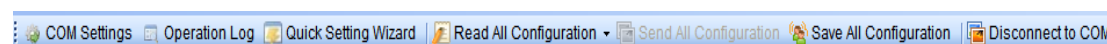
“Manage Tool Version” indicates the version of this Manage Tool.

“Support Version” indicates the firmware which this Manage Tool is used for.

“Device Version” indicates the firmware which connects to PC. It is recommended to use the same version as Support Version. If Support Version and Device Version are different, the new feature(s) of the device can not be used in this tool.

#### 1.4.2.Toolbar

It includes “COM Setting”, “Operation Log”, “Quick Setting Wizard”, “Real All Configuration”, “Send All Configuration”, “Save All Configuration”, and “Connect/Disconnect to COM”.

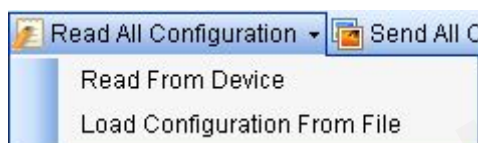


**[COM Setting]:** It is used to set the COM information and password. For Setting details, please refer to Chapter 1.2.

**[Operation Log]:** It is used to display/hide operation log.

**[Quick Setting Wizard]:** It is used to open Quick Setting Wizard directly. Please refer to Chapter 2.1 for details.

**[Read All Configuration]:** It includes “Read From Device” and “Load Configuration From File”



“Read From Device”: It is used to read all configuration from device which connects to PC.

“Load Configuration From File”: It is used to load configuration file to the Manage Tool.

**[Send All Configuration]:** It is used to send all configurations in Command Operation Space.

**[Save All Configuration]:** It is used to save all configurations in Command Operation Space to file.

**[Connect/Disconnect to COM]:** It is used to Connect/Disconnect COM manually.

### 1.4.3.Command Browser and Command Operation Space

This area is mainly used to read and set parameters of the device.

#### 1.4.3.1.Command Brower

Command Brower divides all @Track protocol commands into several parts. Click Function in command Brower, parameters of this command will be shown in Command Operation Space.

Command Brower	Function Description	Related Command
Server Connection	Backend Server Registration Information	<b>GTSRI</b>
Device Configuration	Basic Equipment Information	<b>GTBEI</b>
	Remote Phone Book Control	<b>GTPHB</b>
	Remote Volume Control	<b>GTRVC</b>
	Time Adjustment	<b>GTTMA</b>
Position Related Report	Fixed Time Report Information	<b>GTTRI</b>
Alarm Settings	Geo-Fence Information	<b>GTGEO</b>
	Motion Sensor Alarm	<b>GTMSA</b>
	SOS Key Function	<b>GTSOS</b>
	SIM Card Binding	<b>GTBND</b>
	Non-Movement Detection	<b>GTNMD</b>
	Push Button Alarm	<b>GTPBA</b>
Other Settings	Real Time Operation	<b>GTRTO</b>

White Call List Table

GTWLT

### 1.4.3.2.Command Operation Space

Command  
Description

Parameters  
Area

Command  
Display

**Backend Server Configuration** is used to configure where and how to report all the messages.

**Basic Settings**

Report Mode:

**Backend Server Settings**

APN:

APN user name:

APN user password:

Main Server IP/ Domain Name:

Main Server Port:

Main SMS gate way:

AT+GTSRI=gt301,2,cmnet,,,220.178.67.210,10089,18298268760,F

**[Command Description]:** There is a short description for the command.

**[Parameters Area]:** Set/Read parameters of this command in this area.

**[Command Display]:** Command with parameters in parameters area is displayed in this area.

**[Read]:** Click this button to read this command from the device.

**[Send]:** Click this button to send this command to the device.

### 1.4.4.Title Bar

Title Bar indicates current command title and the name of the Manage Tool.

### 1.4.5.Status Bar

There are system status and current status in status bar.

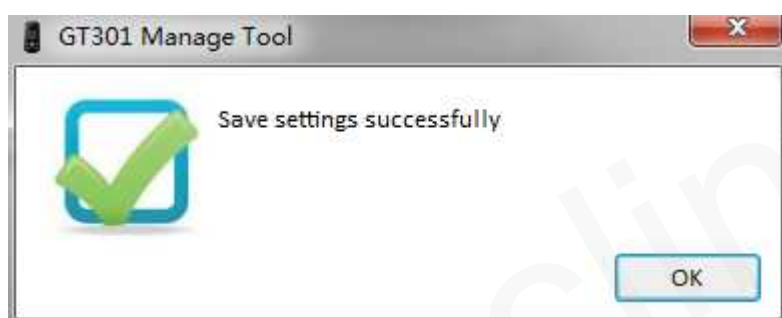
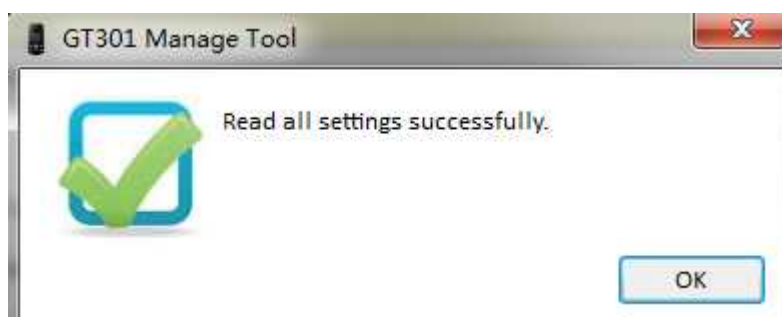
System Status: Executing: N/A, Waiting: 0 commands    Current Status: COM6 is Opened, IMEI is 359464032000247, Software Version is A01V13

**[System Status]:** It indicates the count of the commands which are waiting and being executed.

**[Current Status]:** It indicates the current COM status, IMEI and software version read from the device.

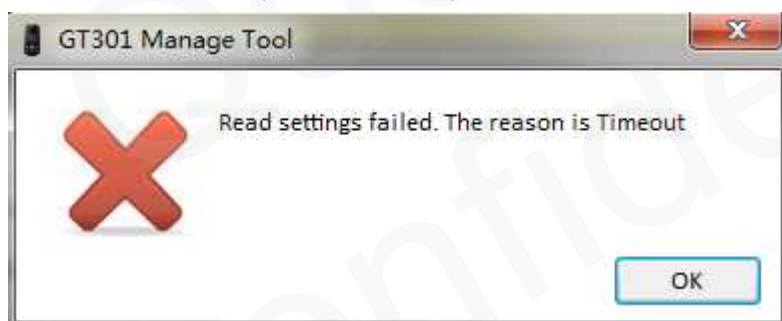
## 1.5. Operation Result Interface

### 1.5.1. Operation Successful Interface



### 1.5.2. Operation Failed Interface

There should be COM port connection problem if the failure reason is timeout.



There should be COM port that is occupied. Please close all other COM-related applications.



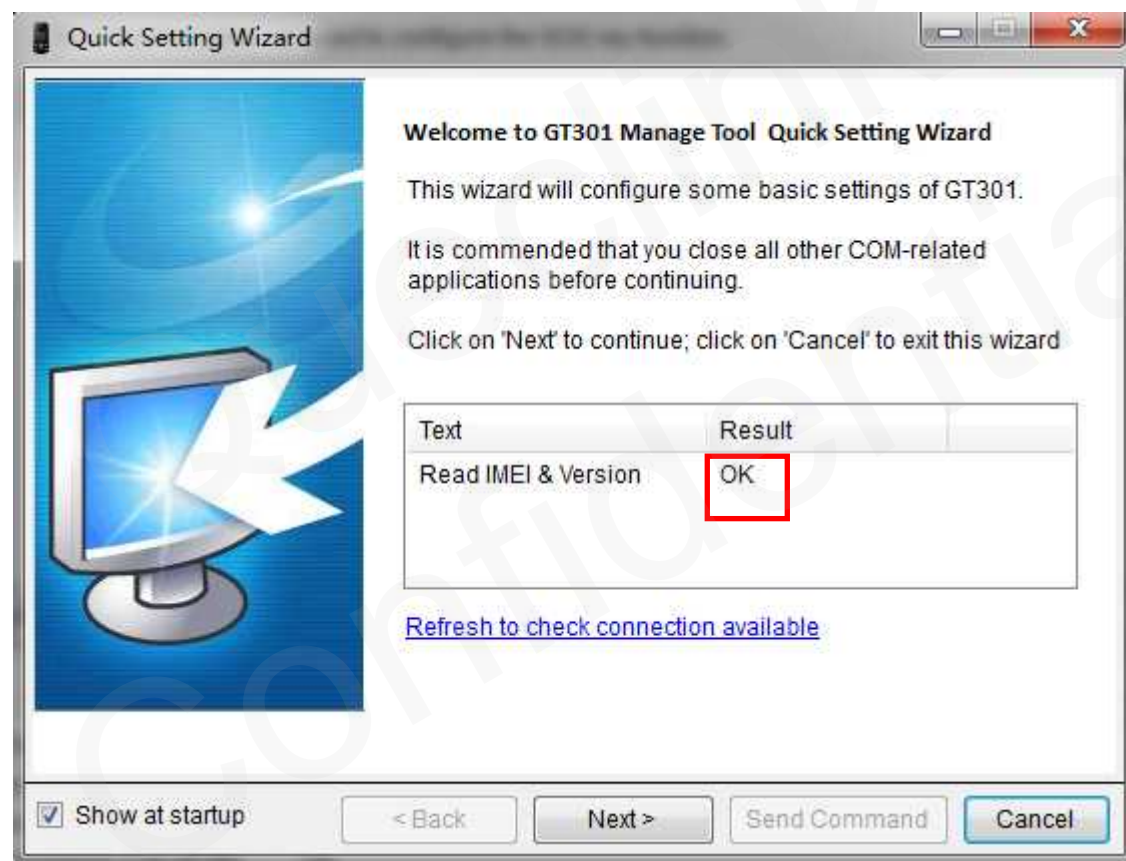
## 2. GT301 Operation Instructions

### 2.1. Device Configuration with Quick Setting Wizard

The Manage Tool is developed based on the @Track Air Interface Protocol. Please refer to “GT301 @Track Air Interface Protocol 2nd generation” for details.

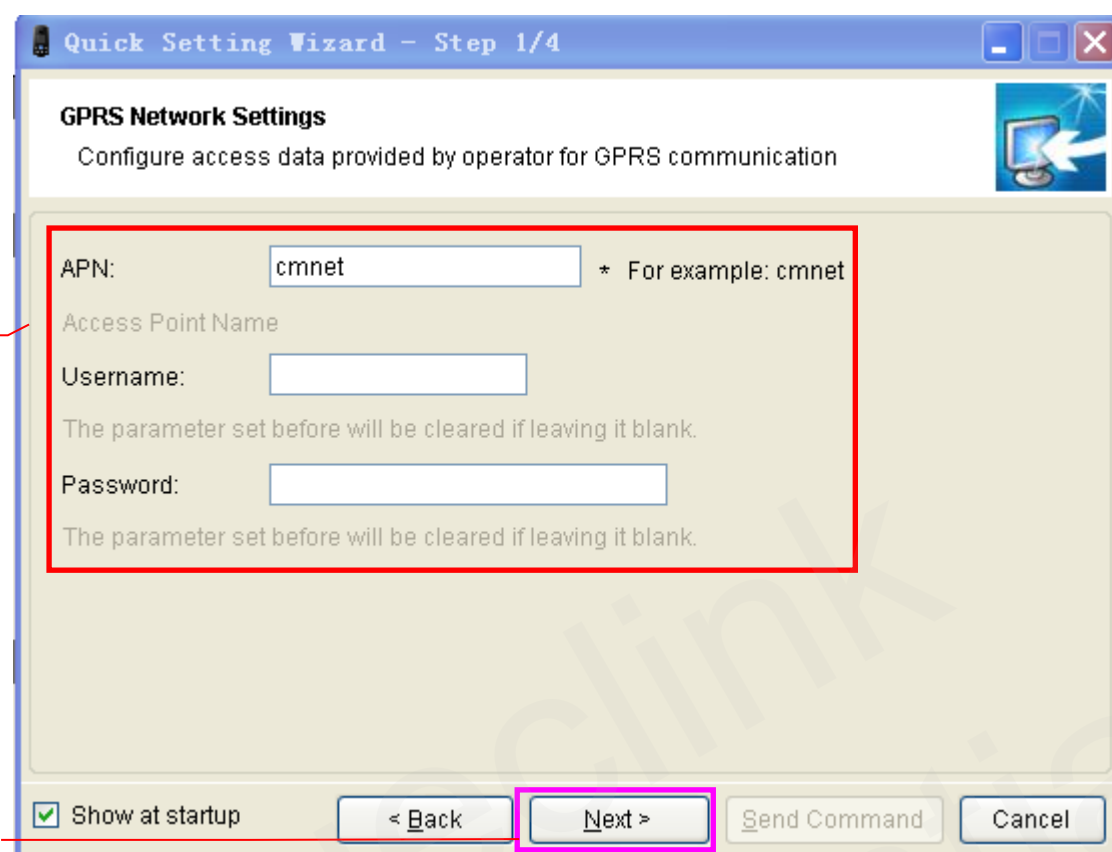
The Quick Setting Wizard provides basic settings for the device. If you want to use more functions of GT301, please change to professional setting mode.

#### 2.1.1. Welcome to Quick Setting Wizard



Click “Quick Setting Wizard” in toolbar, and open Quick Setting Wizard. If the “Result” in this window is OK, click “Next”. If the Result is not OK, please check the COM port connection till the result is OK.

### 2.1.2.GPRS Network Setting



Quick Setting Wizard - Step 1/4

**GPRS Network Settings**  
Configure access data provided by operator for GPRS communication

APN:  \* For example: cmnet

Access Point Name

Username:

The parameter set before will be cleared if leaving it blank.

Password:

The parameter set before will be cleared if leaving it blank.

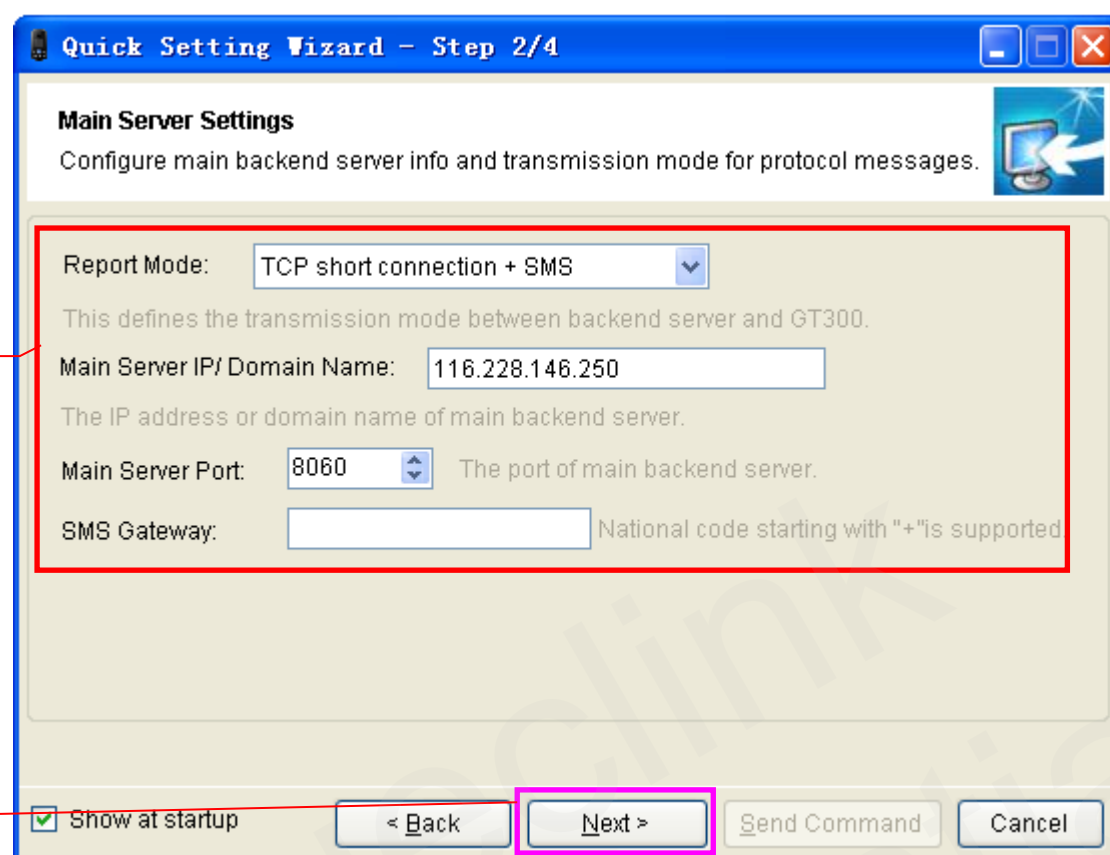
☒ Show at startup

< Back   Next >   Send Command   Cancel

**Step\_1:** Set APN, APN user name and password in this window. For the meanings of these parameters, please refer to the "GT301 @Track Air Interface Protocol 2nd generation".

**Step\_2:** Then click "Next".

### 2.1.3. Main Server Setting



**Quick Setting Wizard - Step 2/4**

**Main Server Settings**  
Configure main backend server info and transmission mode for protocol messages.

Report Mode: TCP short connection + SMS

This defines the transmission mode between backend server and GT300.

Main Server IP/ Domain Name: 116.228.146.250

The IP address or domain name of main backend server.

Main Server Port: 8060 The port of main backend server.

SMS Gateway: National code starting with "+" is supported

☒ Show at startup

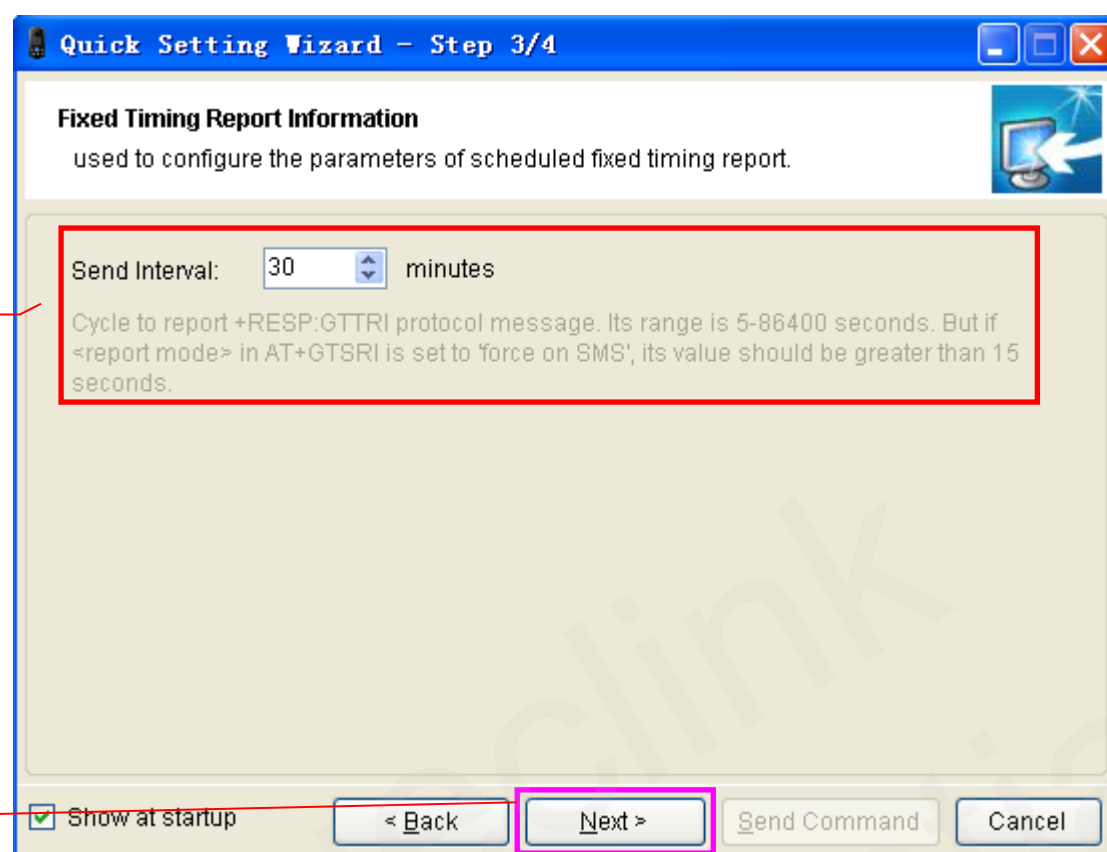
< Back Next > Send Command Cancel

**Step\_1:** Set report mode, main server, main server port and SMS gateway in this window. For the meanings of these parameters, please refer to the "GT301 @Track Air Interface Protocol 2nd generation".

**Step\_2:** Then click "Next".



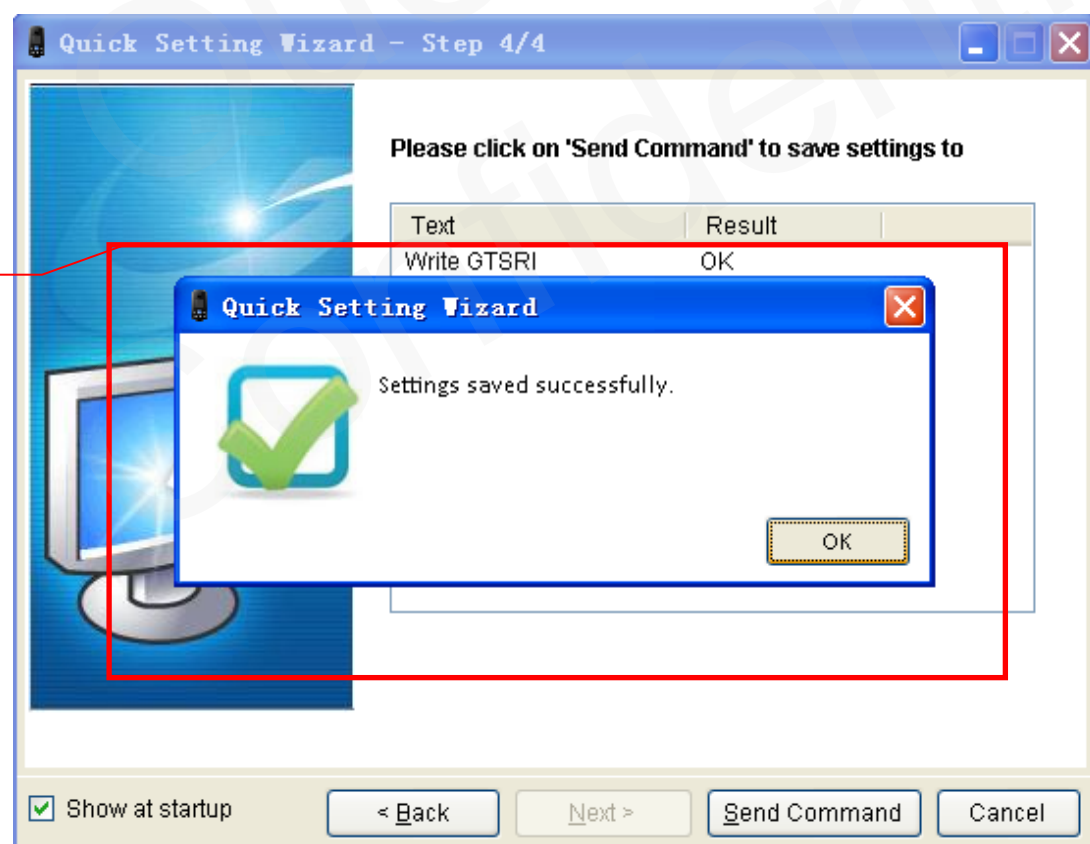
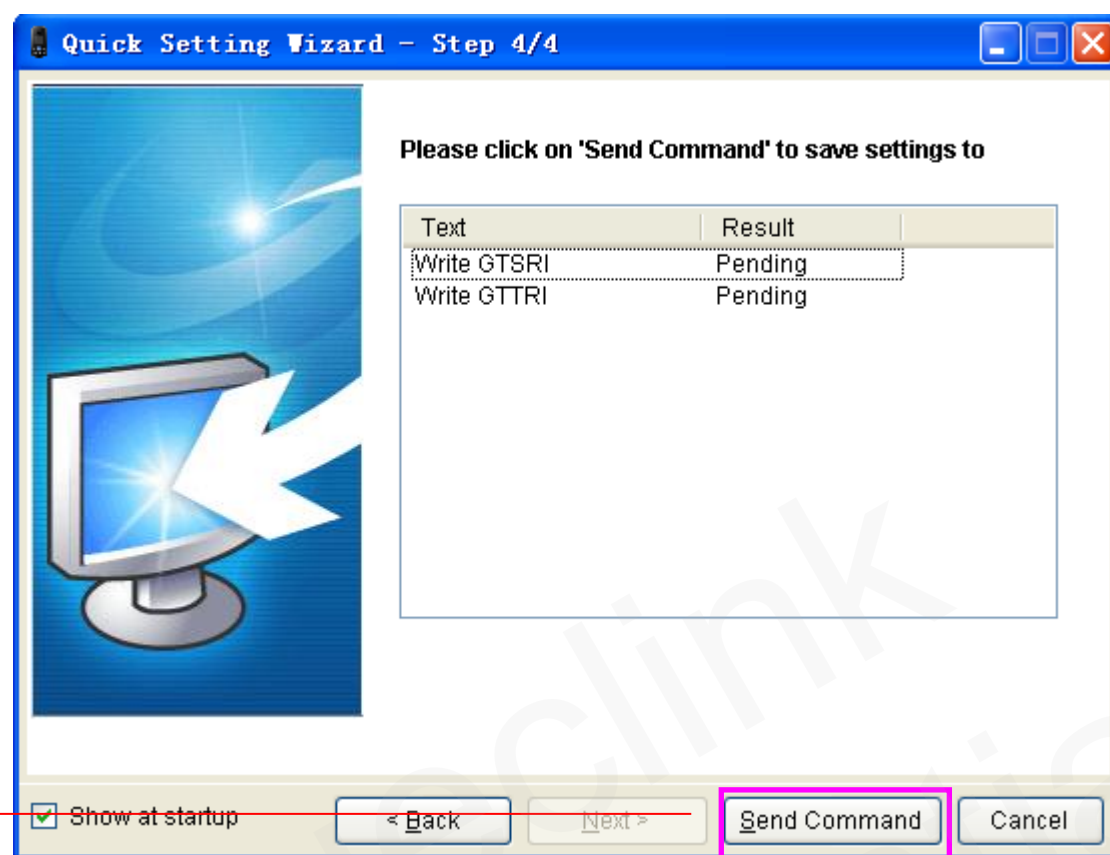
### 2.1.4.Fixed Time Report Setting



**Step\_1:** Set send interval in this window. For the meanings of the parameters, please refer to the "GT301 @Track Air Interface Protocol 2nd generation".

**Step\_2:** Then click "Next".

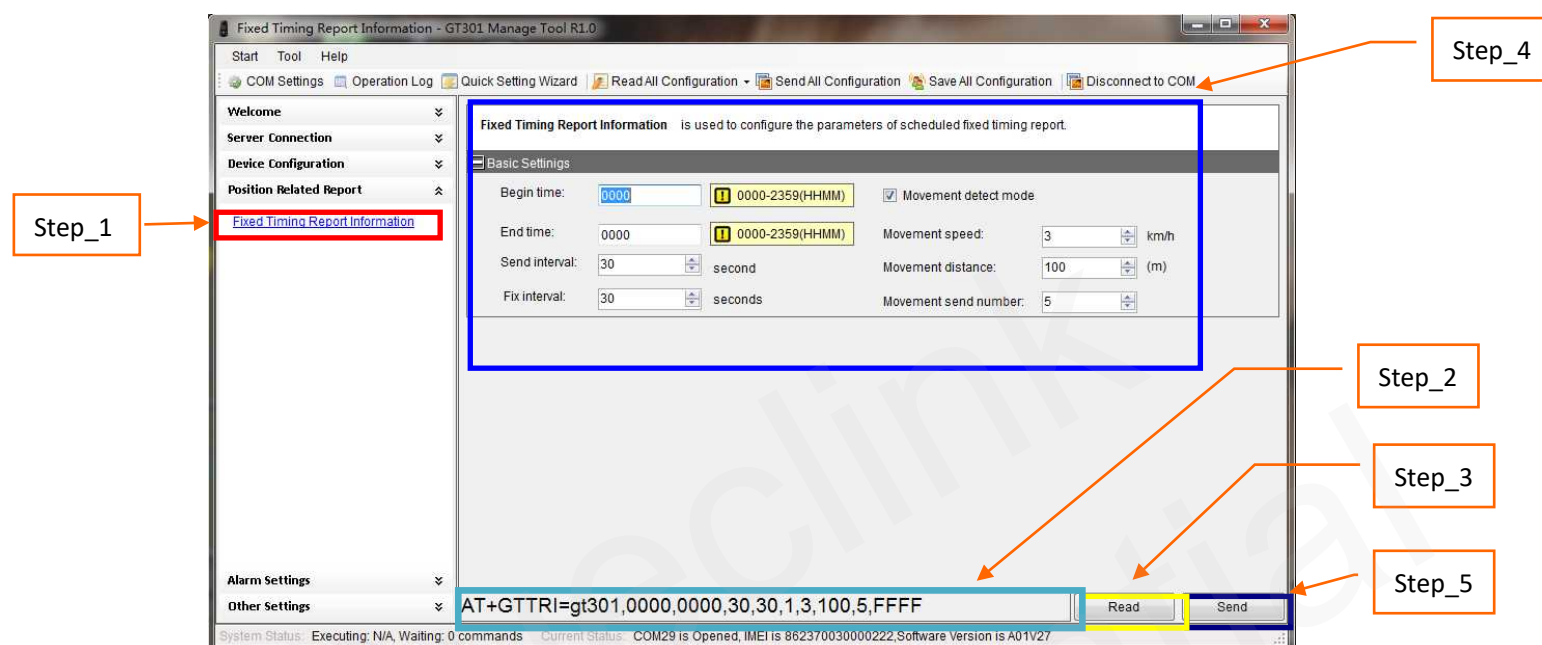
## 2.1.5. Sending Command to Device



## 2.2. Device Configuration in Professional Setting Mode

The Manage Tool is developed based on the @Track Air Interface Protocol. Please refer to “GT301 @Track Air Interface Protocol 2nd generation” for details.

The following shows a general procedure to configure GT301 with the Manage Tool.



**Step\_1:** Select “Fixed Timing Report Information”. After that, the parameters of **GTTRI** will be shown in Command Operation Space.

**Step\_2:** The command message which shall be sent to GT301 will be generated based on input and displayed here. Please note this command message can also be sent to GT301 through SMS or GPRS.

**Step\_3:** It is recommended to read the parameters from GT301 and edit settings based on them.

**Step\_4:** Set TRI parameters. Please refer to “GT301 @Track Air Interface Protocol 2nd generation” for the meaning of each parameter.

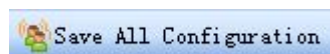
**Step\_5:** Click the “Send” button; download the parameters of **GTTRI** to GT301.

## 2.3. Read/Save All Configurations

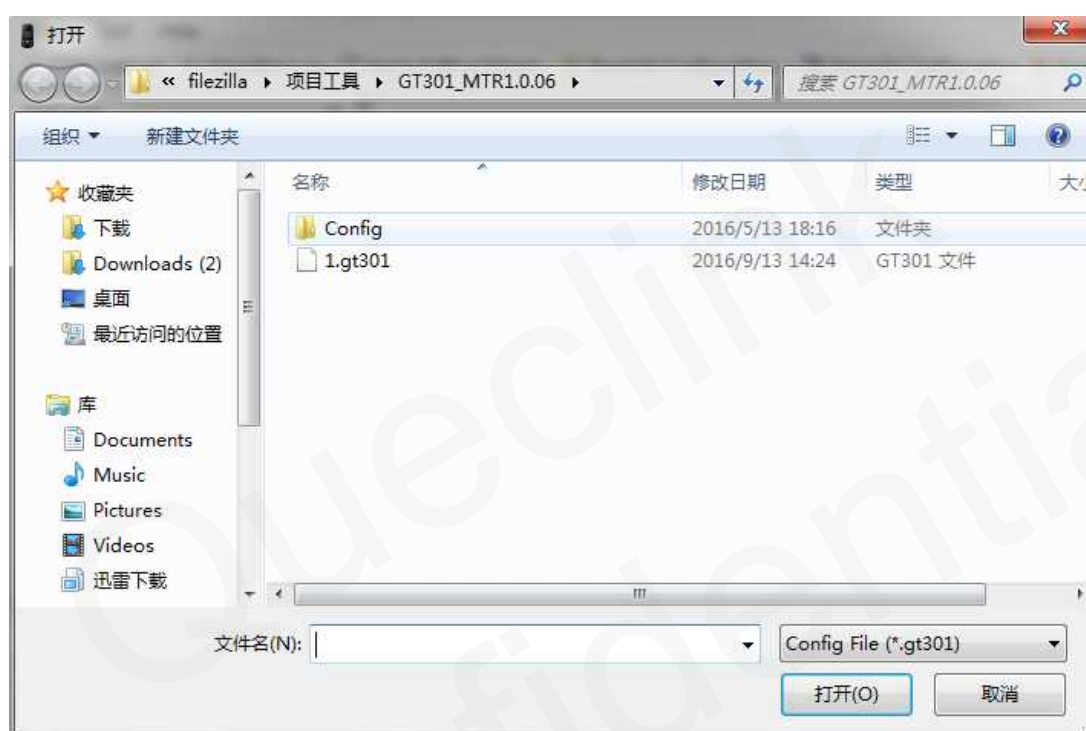
**Step\_1:** It is recommended to read all configurations from the device before saving the configuration. Select “Read All Configuration” → “Read From Device”.



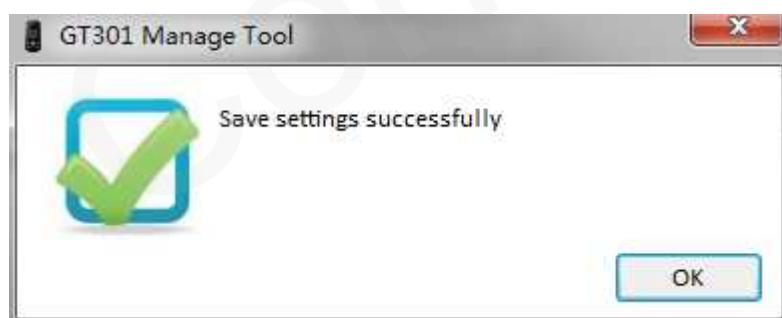
Step\_2: After reading successfully, click “Save All Configuration” in toolbar.



Step\_3: Select a folder, type in the name of the configuration file, and then click “Save” button.

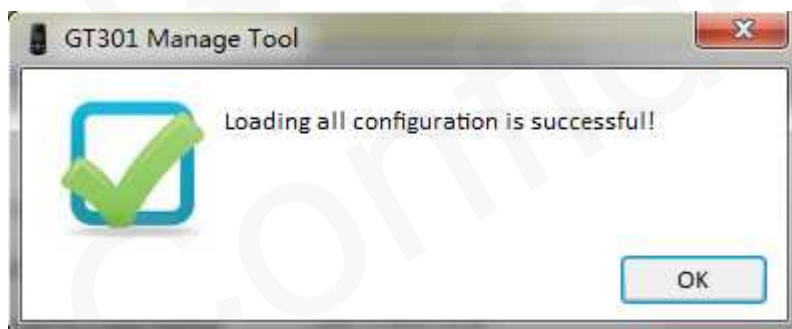
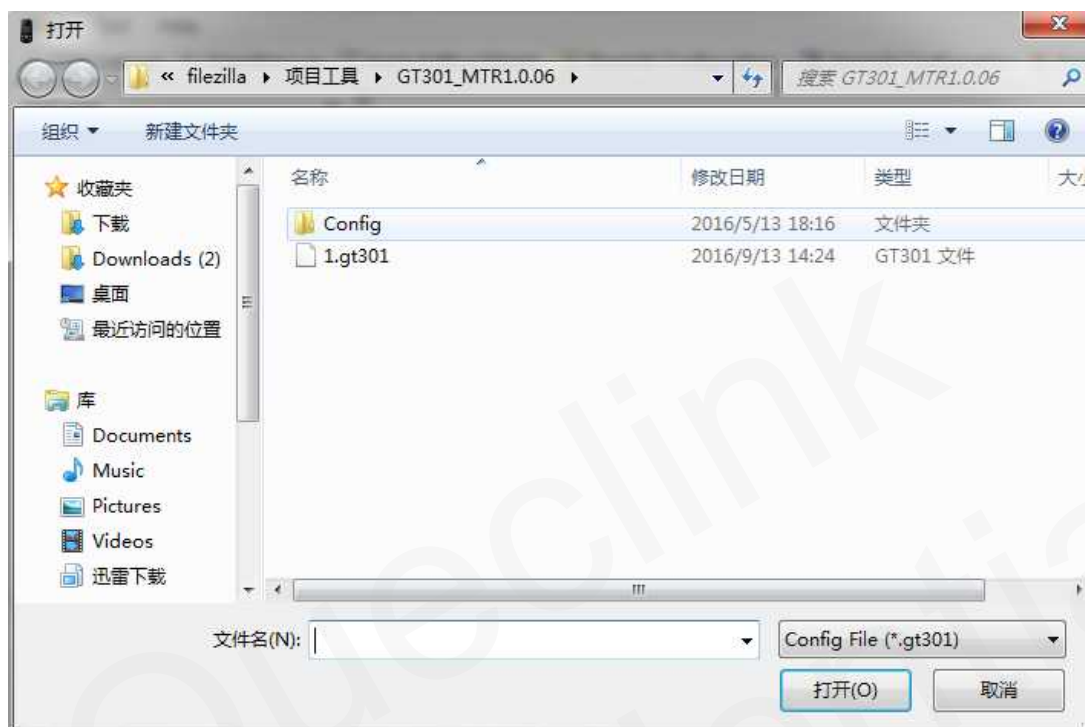


Step\_4: Saved successfully.



## 2.4. Load/Send All Configurations

Step\_1: Before sending all configurations, please load the configuration file or set all parameters in commands. To load configuration file, please select “Read All Configuration” → “Load Configurations From File”. Then select the configuration file you need.



Step\_2: You can set the parameters in commands based on the configuration file, and then click “Send All Configuration” in toolbar.



**Note:** Command **GTRTO** will not be sent when clicking “Send All Configuration”.

Step\_3: The Manage Tool will send all commands to the device.